



THE LEADER

*Photograph by F. Hurley*

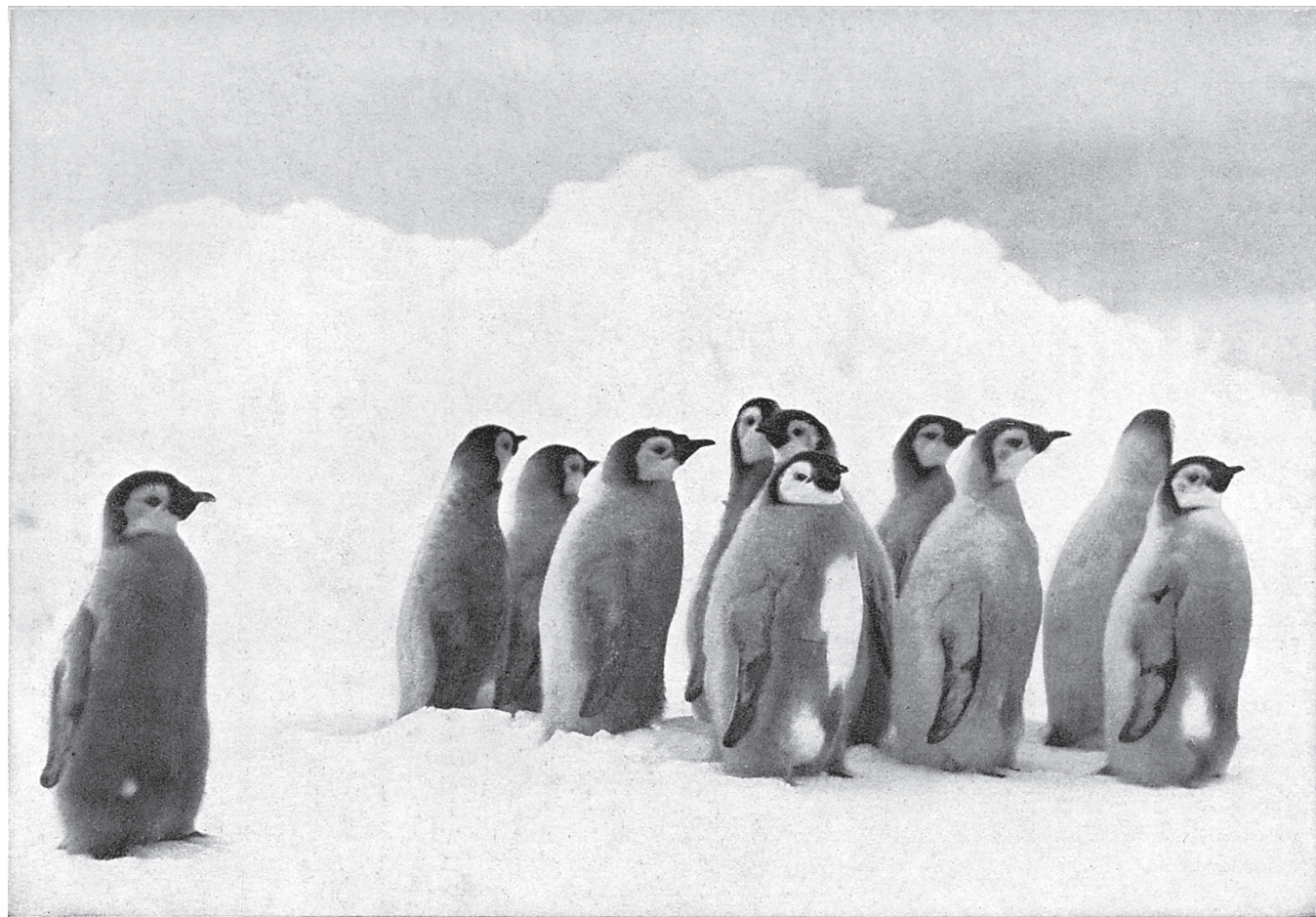


## THE WEDDELL SEA PARTY

*Photograph by F. Hurley*

			Holness	Bakewell						
				Stephenson	Howe					
		McNeish	James	Wild	Worsley	Hudson	Green			
Cheetham	Crean	Hussey	Greenstreet	Sir Ernest	Shackelton	Sir David	Gooch	Rathewson	Hurley	





YOUNG EMPEROR PENGUINS

*Photograph by F. Hurley*



*Photograph by F. Hurley*

A HUGE FLOE OF CONSOLIDATED PACK





SAMSON

*Photograph by F. Hurley*



#### ICE FLOWERS

*Photograph by F. Hurley*

Formed by a lead opening in the ice and then rapidly freezing over





MIDNIGHT OFF THE NEW LAND

*Photograph by F. Hurley*



NEW LAND  
Caird Coast

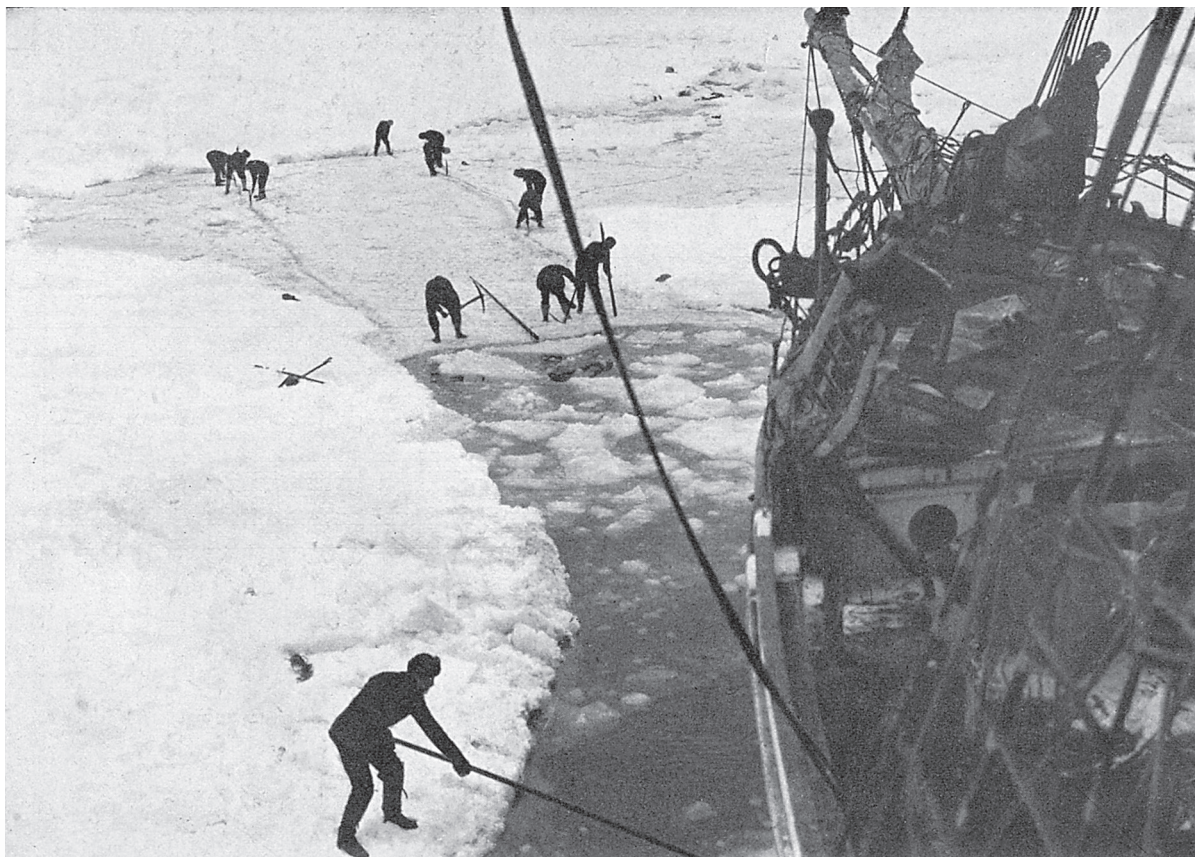
*Photograph by F. Hurley*





CLOSE UNDER THE BARRIER

*Photograph by F. Hurley*



*Photograph by F. Hurley*

TRYING TO CUT A WAY FOR THE SHIP THROUGH THE ICE TO A LEAD AHEAD. Feb. 14, 1915.





THE NIGHT WATCHMAN'S STORY

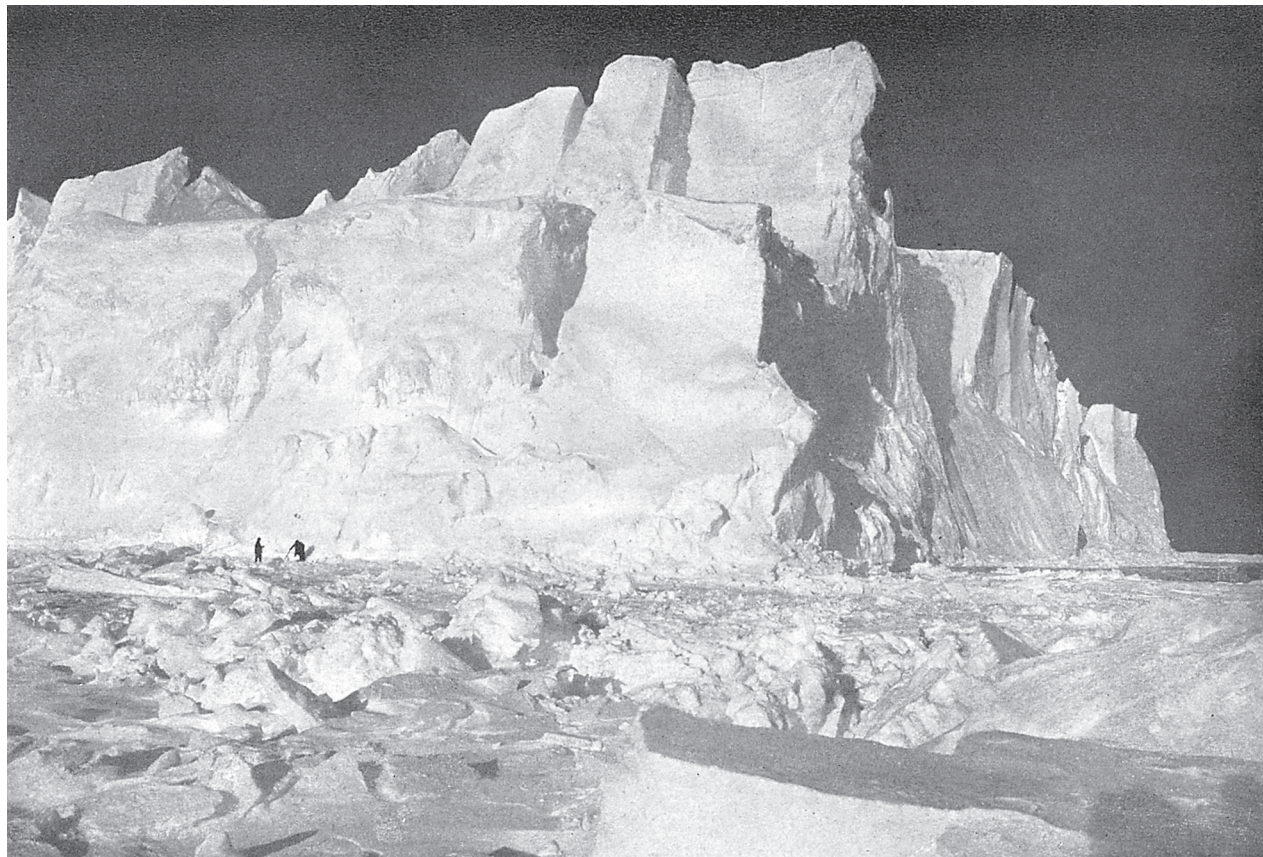
*Photograph by F. Hurley*



THE DYING SUN  
The *Endurance* firmly frozen in

*Photograph by F. Hurley*





THE RAMPART BERG

*Photograph by F. Hurley*



*Photograph by F. Hurley*

A BI-WEEKLY PERFORMANCE

Scrubbing out "The Ritz"  
Cheetham

Wordie

Macklin





Roger

Toby

THE PUPS

Nelson

Nell

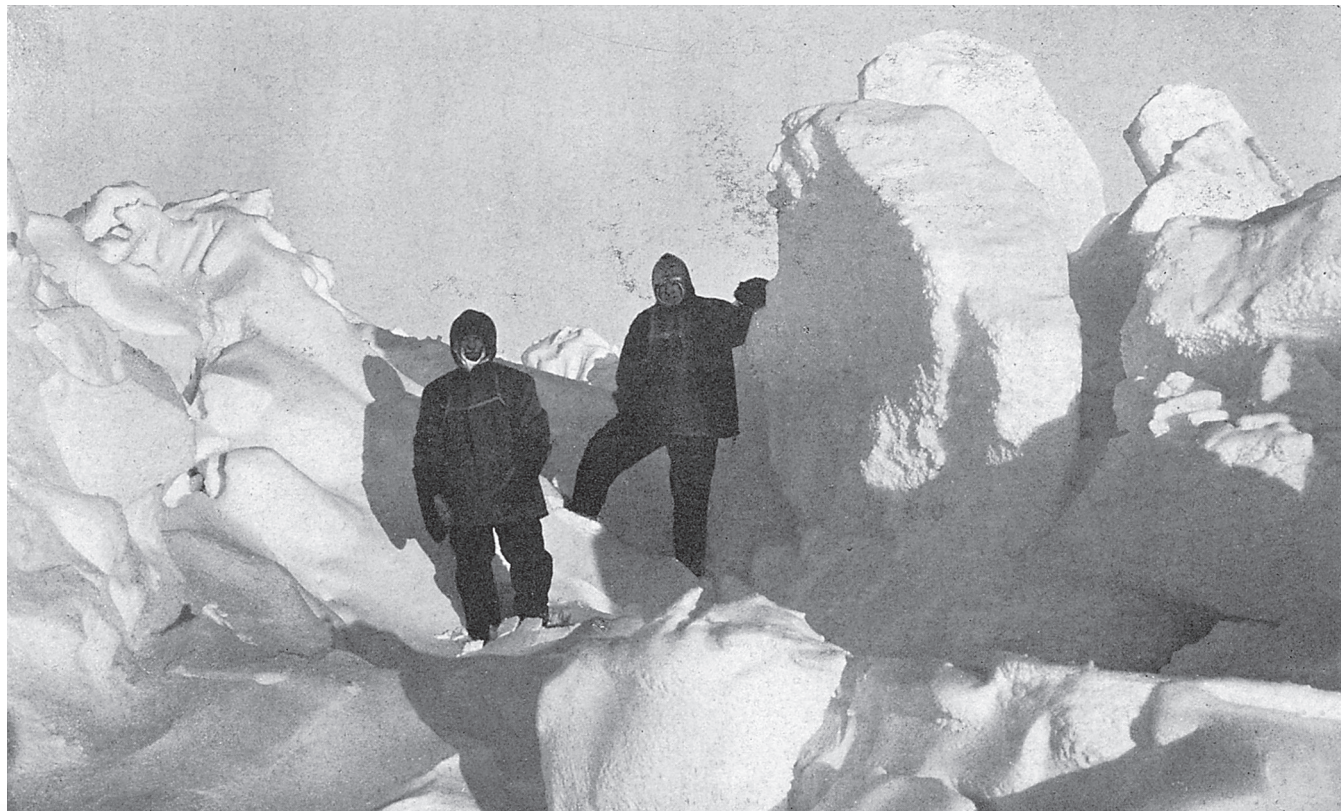
*Photograph by F. Hurley*



ICE PRESSURE APPROACHING THE SHIP  
The *Endurance* at midwinter

*Photograph by F. Hurley*





WILD AND SHACKLETON IN THE HEAVY PRESSURE

*Photograph by F. Hurley*



EXERCISING THE DOGS

*Photograph by F. Hurley*





CRAB-EATER SEALS

*Photograph by F. Hurley*

Note the long parallel scars from the teeth of the killer whales



*Photograph by F. Hurley*

THE BEGINNING OF THE END

The ship heeled over as a result of very heavy pressure





A WEEK LATER

*Photograph by F. Hurley*



THE WRECKAGE LIES AROUND IN DISMAL CONFUSION  
Wild taking a last look at the ship before she sank

*Photograph by F. Hurley*





THE FIRST ATTEMPT TO REACH THE LAND 346 MILES AWAY  
The wreck of the *Endurance* in the distance

*From a drawing by G. Marston*



OCEAN CAMP

*Photograph by F. Hurley*





THE LOOKOUT AT OCEAN CAMP  
The King's flag flying over the ship's burgee

*Photograph by F. Hurley*



*Photograph by F. Hurley*

THE EMERGENCY SLEDGES BEING PACKED IN CASE OF A SUDDEN BREAK UP OF THE ICE





THE SLEDGES PACKED AND READY

*Photograph by F. Hurley*



RELAYING THE JAMES CAIRD

*Photograph by F. Hurley*





POTASH AND PERLMUTTER

*Photograph by F. Hurley*

"It was a welcome sight to see the canvas screen go up on some oars"



"LONELINESS"  
Patience Camp

*Photograph by F. Hurley*





THE KITCHEN AT PATIENCE CAMP

*Photograph by F. Ewley*



*Photograph by F. Hurley*

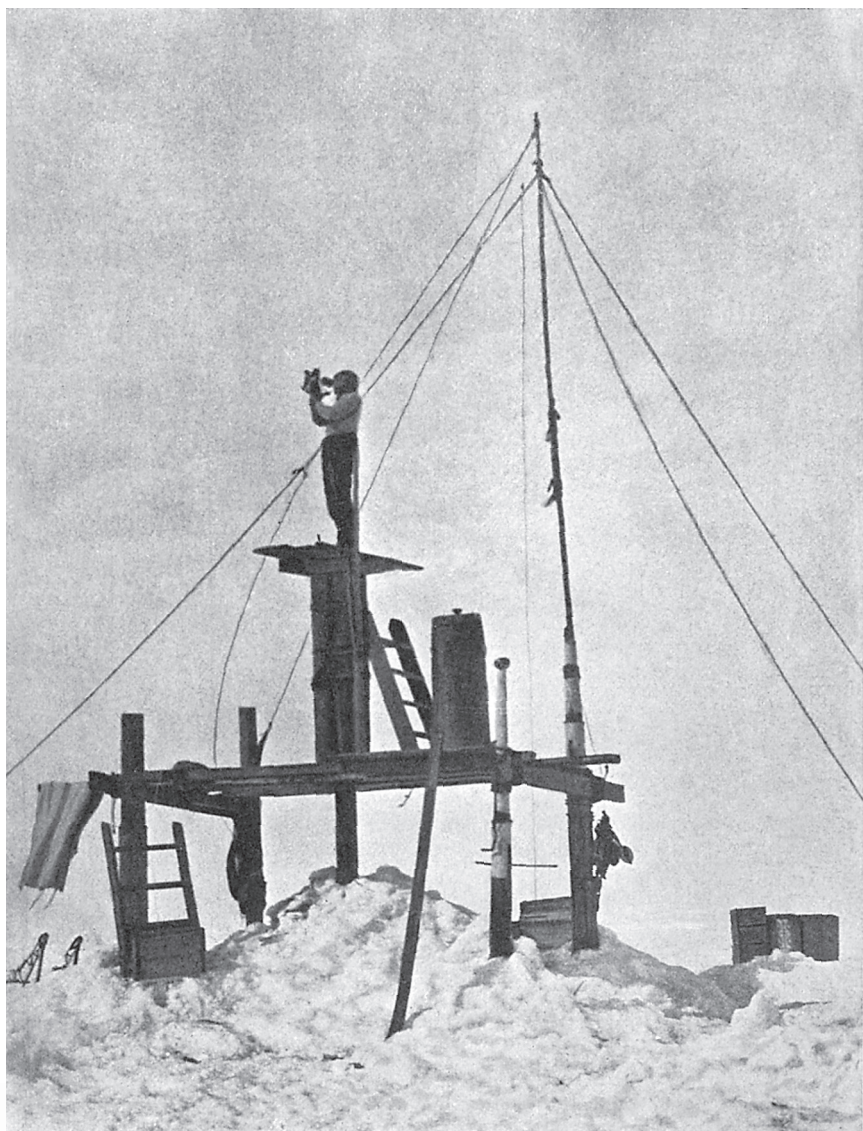
THE STOVE AT PATIENCE CAMP CONSTRUCTED OUT OF OLD OIL-DRUMS

Seal blubber and penguin-skins were used as fuel

Hurley

Shackleton





*Photograph by F. Hurley*

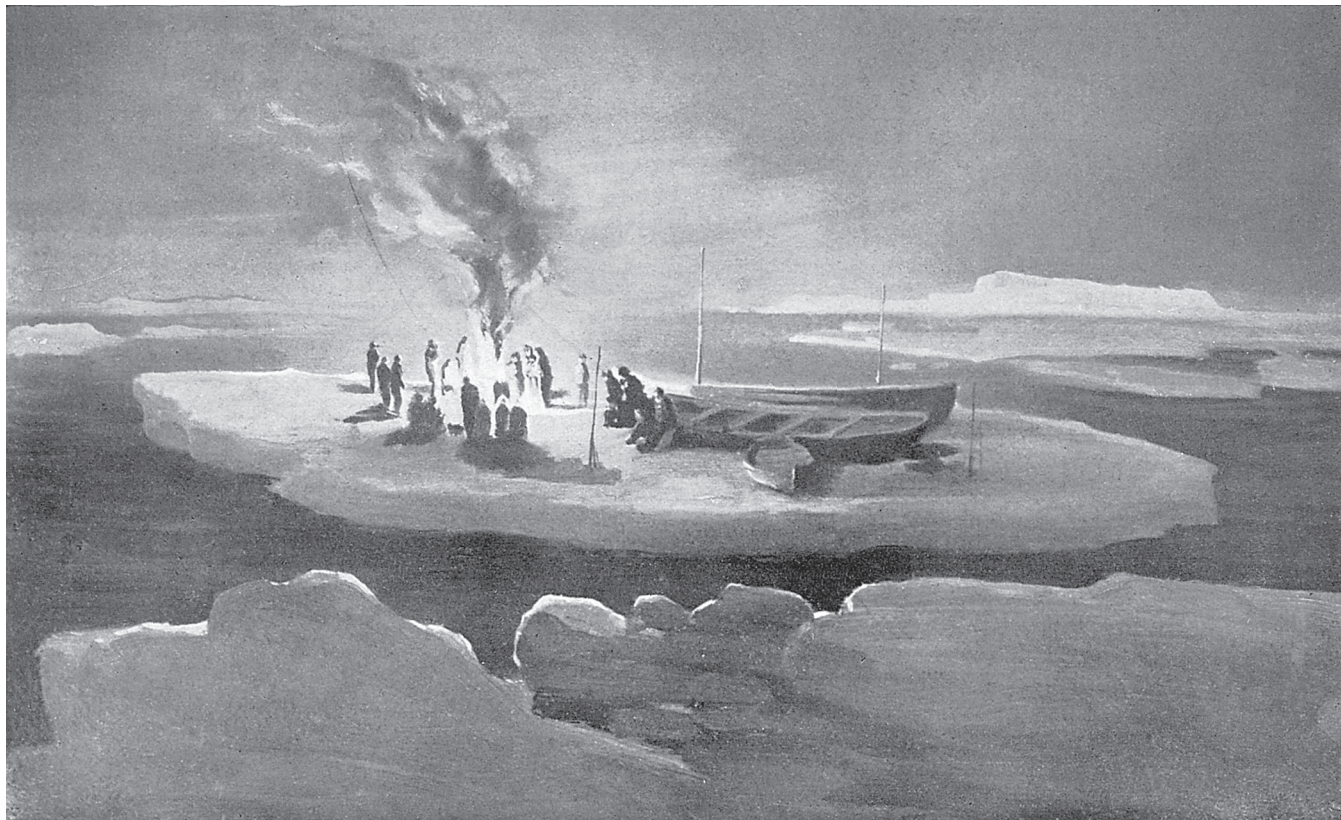
WORSLEY TAKING OBSERVATIONS OF THE SUN TO DETERMINE OUR POSITION



*Photograph by F. Hurley*

"WE CUT STEPS IN THIS 25 FOOT SLAB AND IT MAKES A FINE LOOKOUT"





*From a drawing by G. Marston*

"THERE WAS NO SLEEP FOR US THAT NIGHT SO WE LIT THE BLUBBER STOVE"



HAULING UP THE BOATS FOR THE NIGHT

*From a drawing by G. Marston*





THE REELING BERG

*From a drawing by G. Marston*

“The pack had closed round our berg, making it impossible to launch the boats”



SAILING SOUTH AGAIN

*From a drawing by G. Marston*





THE FIRST LANDING EVER MADE ON ELEPHANT ISLAND, APRIL 15, 1916

*Photograph by F. Hurley*



"WE PULLED THE THREE BOATS A LITTLE HIGHER ON THE BEACH"

*Photograph by F. Hurley*





THE FIRST DRINK AND HOT FOOD FOR THREE AND A HALF DAYS

*Photograph by F. Hurley*

Lees

Wordie

Clark

Rickenson

Greenstreet

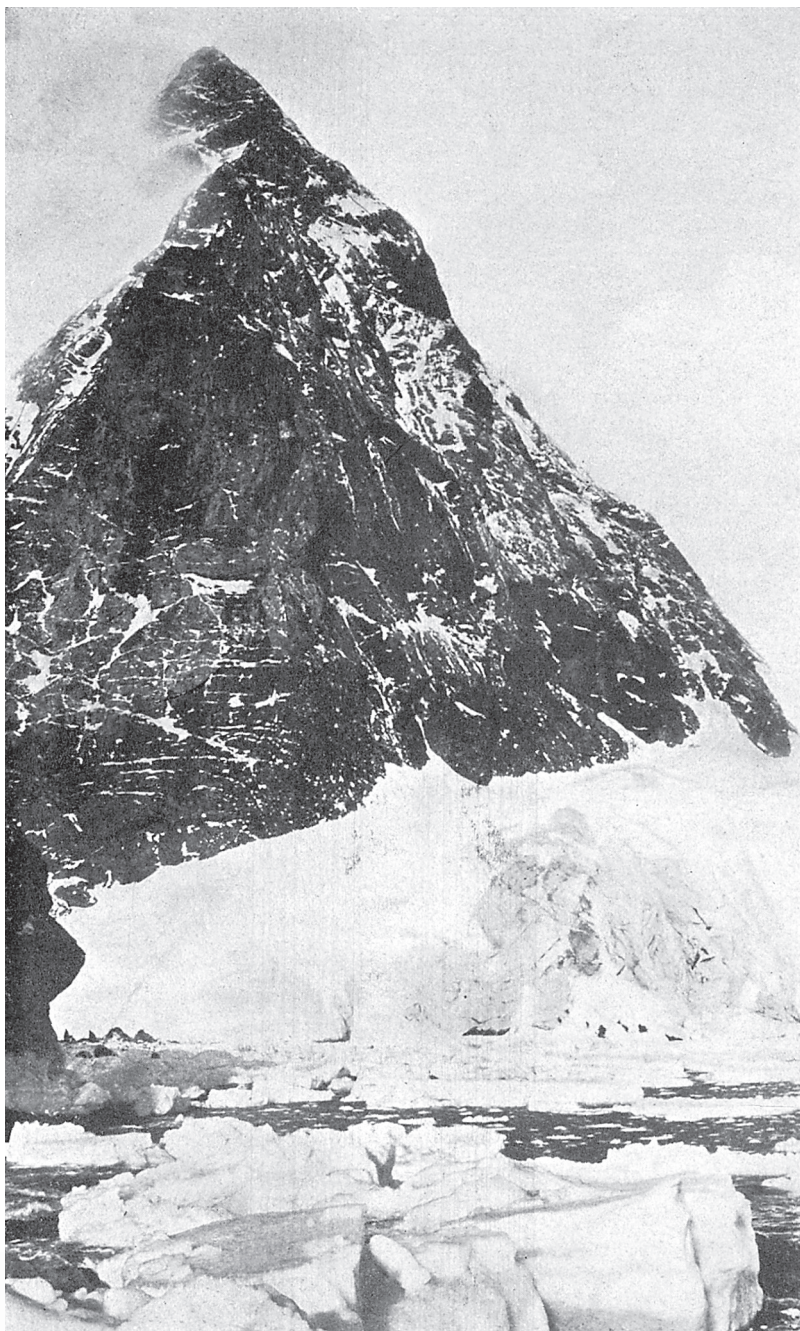
Howe

Shackleton

Bakewell

Kerr

Wild



*Photograph by F. Hurley*

MOUNT FRANK HOULDER, ELEPHANT ISLAND





LAUNCHING THE JAMES CAIRD

*Photograph by F. Hurley*



THE STANCOMB-WILLS

*Photograph by F. Hurley*





*Drawn from material supplied by the Boat Party*

IN SIGHT OF OUR GOAL  
Nearing South Georgia



LANDING ON SOUTH GEORGIA

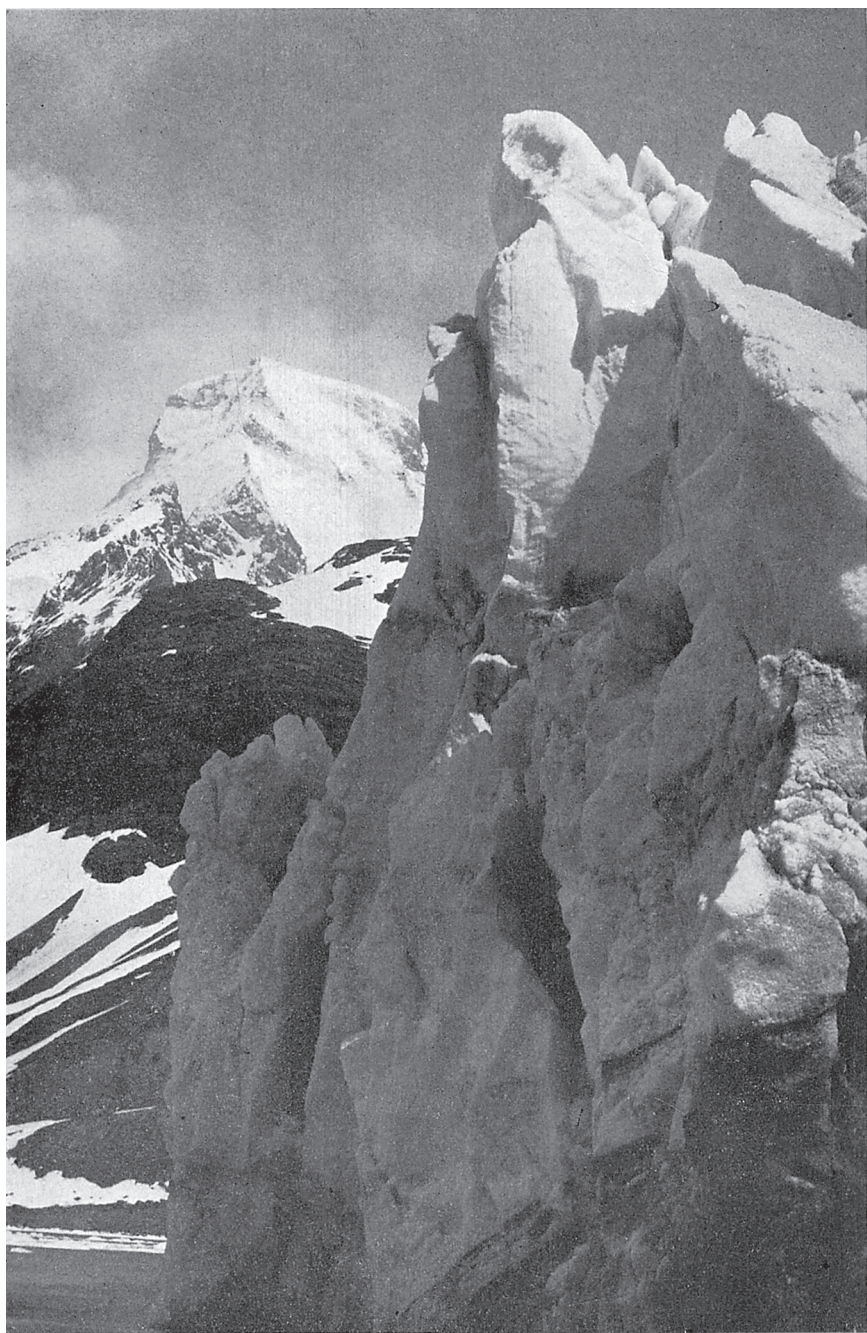
*Composite drawing and photograph*





SEA ELEPHANTS ON SOUTH GEORGIA

*Photograph by F. Hurley*



*Photograph by F. Hurley*

THE CLIFFS WE DESCENDED WHILST CROSSING THE ISLAND





ONE OF THE GLACIERS WE CROSSED

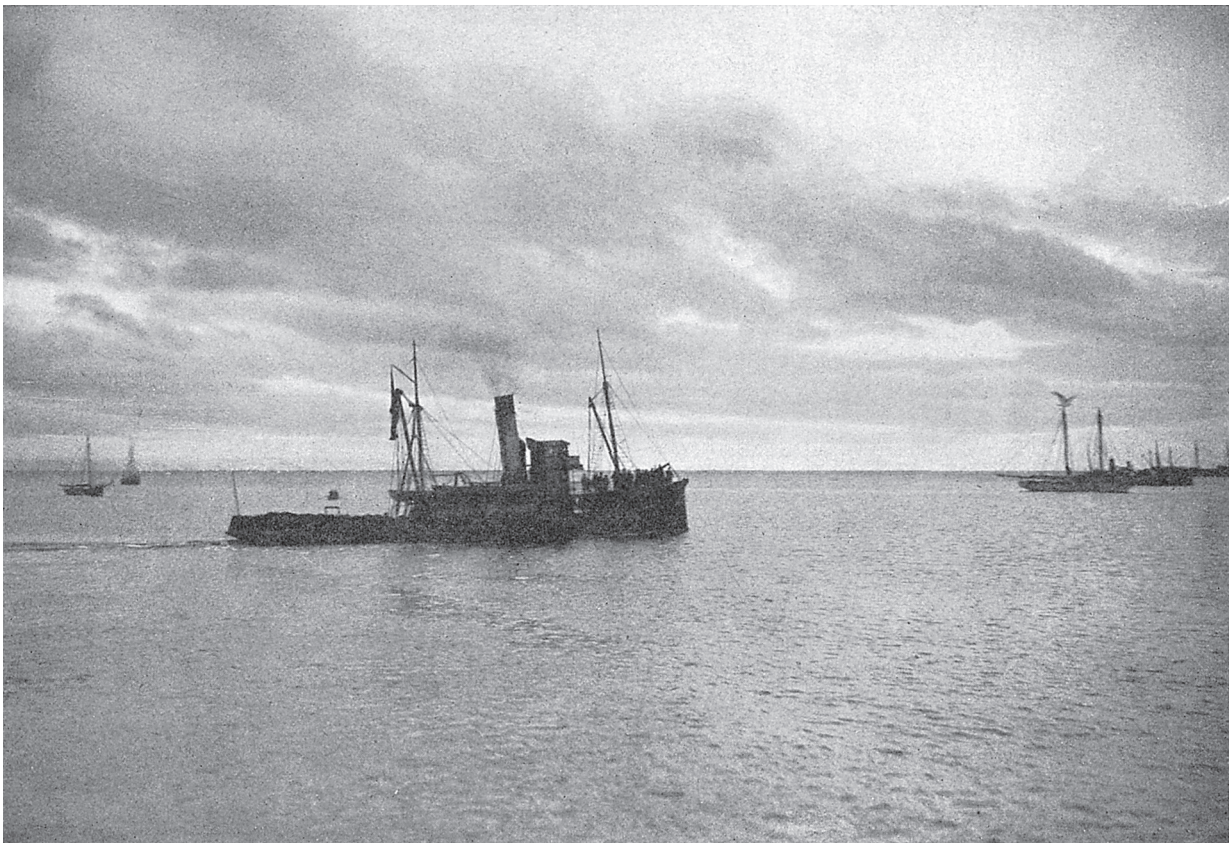
*Photograph by F. Hurley*



A TYPICAL VIEW IN SOUTH GEORGIA

*Photograph by F. Hurley*





THE YELCHO

*Photograph by F. Hurley*

The Chilean tug that reached Elephant Island at the fourth attempt to rescue the 22 men marooned there





PANAORAMA OF SOUTH GEORGIA

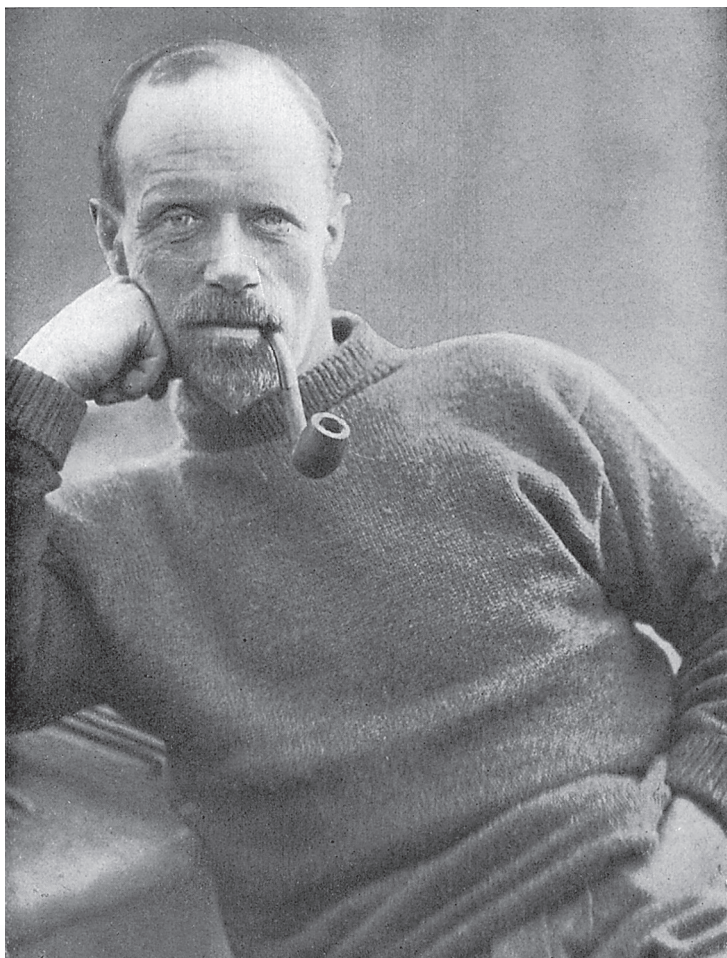
*Photograph by F. Hurley*





ARRIVAL AT PUNTA ARENAS WITH THE RESCUED MEN

*Photograph by F. Hurley*



*Photograph by F. Hurley*

FRANK WILD, SECOND IN COMMAND OF THE EXPEDITION





*Composite drawing and photograph*

VIEW OF INTERIOR OF HUT ON ELEPHANT ISLAND

Inside measurements 18 feet x 9 feet x 5 feet at its highest point. Twenty-two men lived in this hut for 4½ months



# MAROONED ON ELEPHANT ISLAND

The twenty-two men under Wild in front of their hut

*Photograph by F. Hurley*

Greenstreet	McIlroy	Marston	Wordie	James	Holness	Stephenson	McLeod	Hudson	Clark	Lees	Rathewson
Green		Wild		Howe	Cheetham		Bakewell		Hussey	Macklin	
									Kerr		





ELEPHANT ISLAND

*Photograph by F. Hurley*

The sandy spit where the twenty men lived under two upturned boats for four and a half months



*Photograph by F. Hurley*

THE RESCUE SHIP SIGHTED

"As we stood and gazed she seemed to turn away as if she had not seen us"





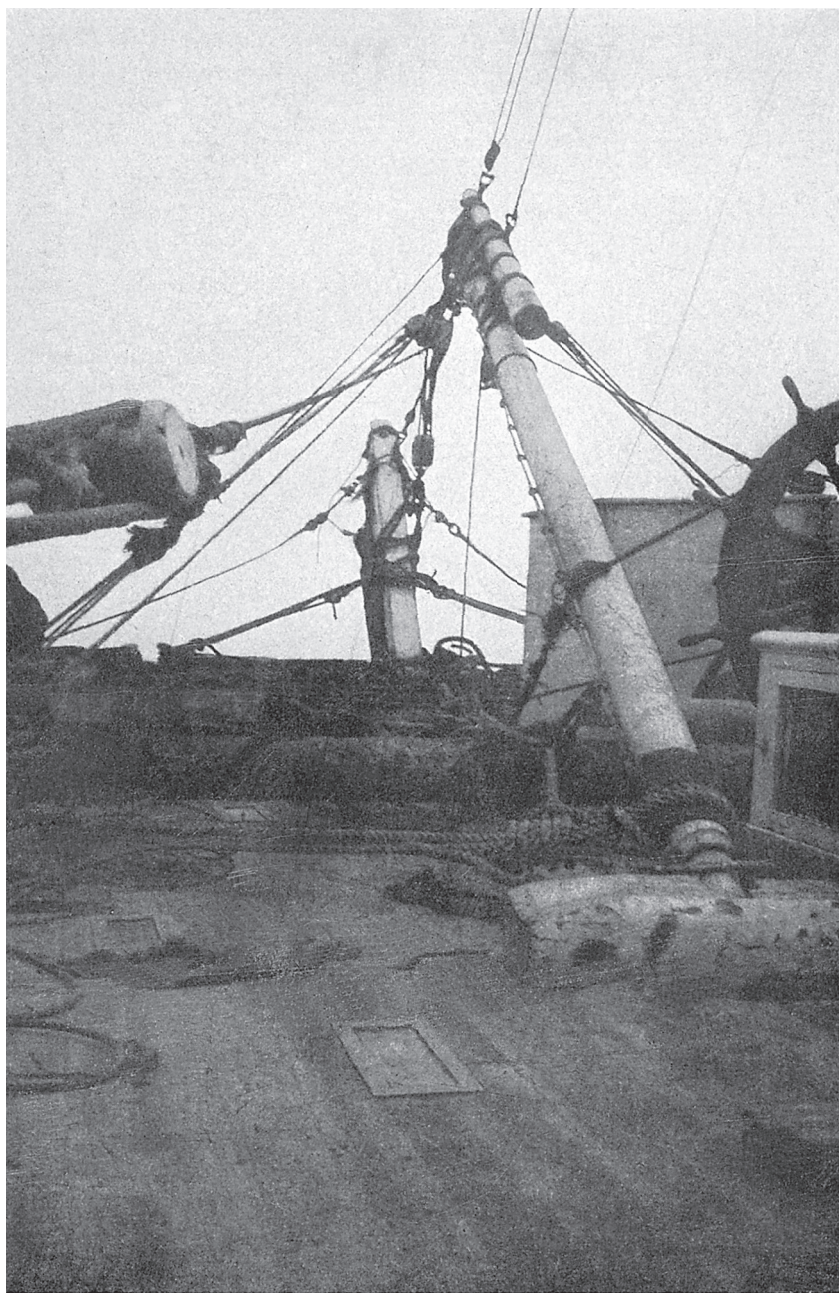
A NEWLY-FROZEN LEAD  
The *Endurance* in the background frozen in

*Photograph by F. Hurley*



THE ROSS SEA PARTY  
Macintosh and Stenhouse in the centre





NEXT MORNING THE JURY RUDDER WAS SHIPPED



ICE NOMENCLATURE

1—Young Ice. (Bay Ice of Scoresby) in middle distance

*Photograph by F. Hurley*





ICE NOMENCLATURE  
2—Light pack

*Photograph by F. Hurley*



ICE NOMENCLATURE  
3—Heavy hummocked pack

*Photograph by F. Hurley*





ICE NOMENCLATURE

4—Hummocky pack and frozen lead of young ice

*Photograph by F. Hurley*



ICE NOMENCLATURE

5—Close pack

*Photograph by F. Hurley*





ICE NOMENCLATURE  
6—Open pack

*Photograph by F. Hurley*



ICE NOMENCLATURE

7—Very open pack, approximating to drift ice

*Photograph by F. Hurley*

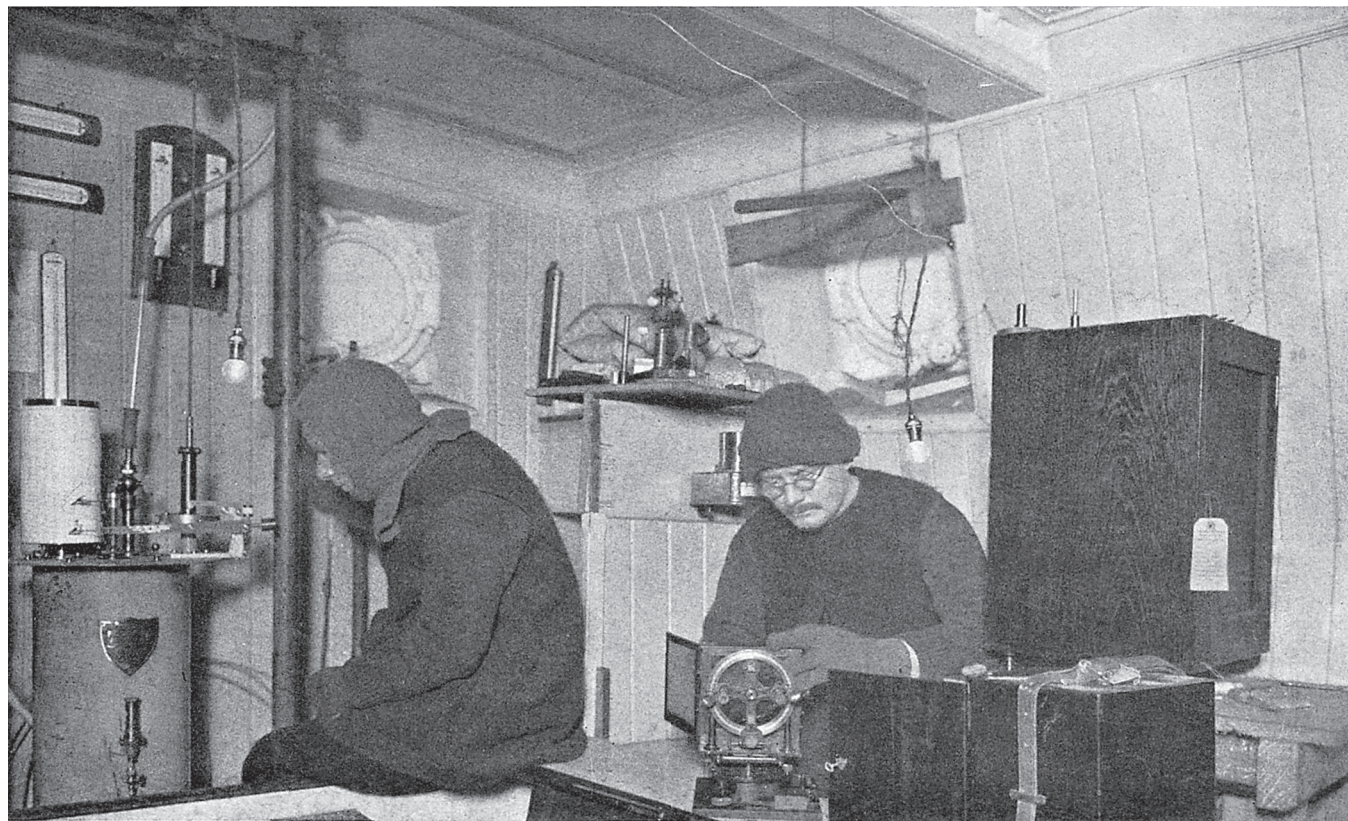




ICE NOMENCLATURE

8—Drift ice

*Photograph by F. Hurley*



# THE ROOKERY

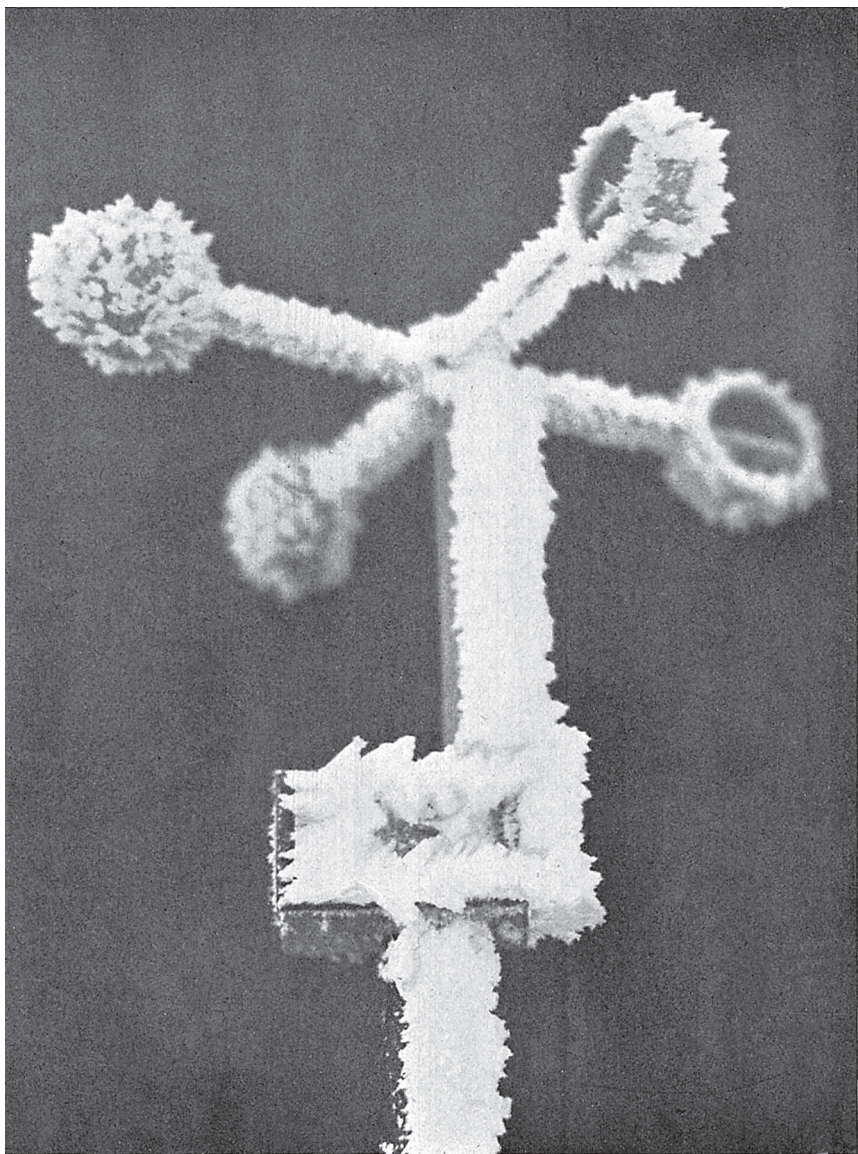
*Photograph by F. Hurley*

The scientific laboratory with Hussey examining the Dine's anemometer and James removing rime from the dip-circle. The electrograph is on the right

Hussey

James





*Photograph by F. Hurley*

THE ANEMOMETER COVERED WITH RIME